

Step 4 - "Windows® 7" Control Issues

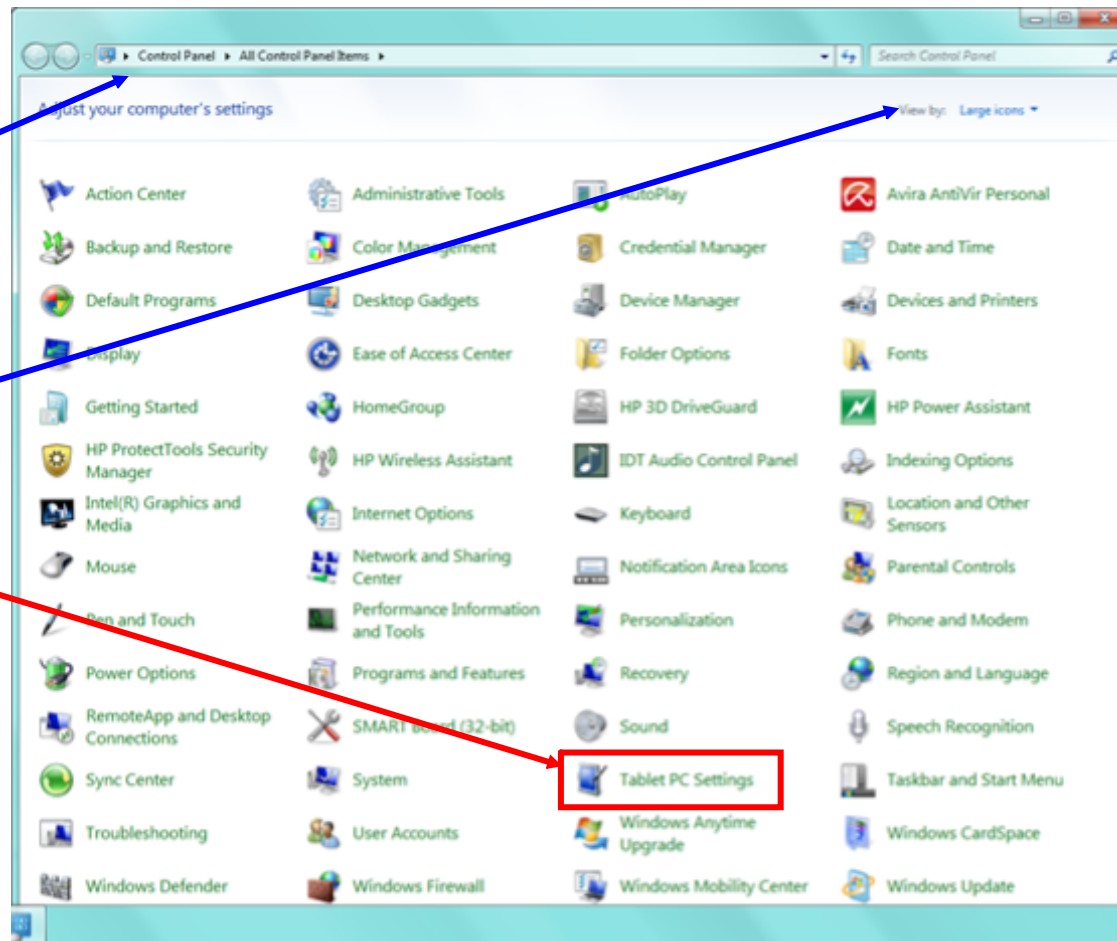
Built into Windows® 7 are features that traditionally are dormant, or are never used by the user. However, once the SMART Notebook™ Software is installed, these features will activate.

Known as the "Pen and Touch" and the "Tablet PC Input Panel" features, these features must be turned off for so that a conflict of control between software will not occur.

First access your computer's **Control Panel**

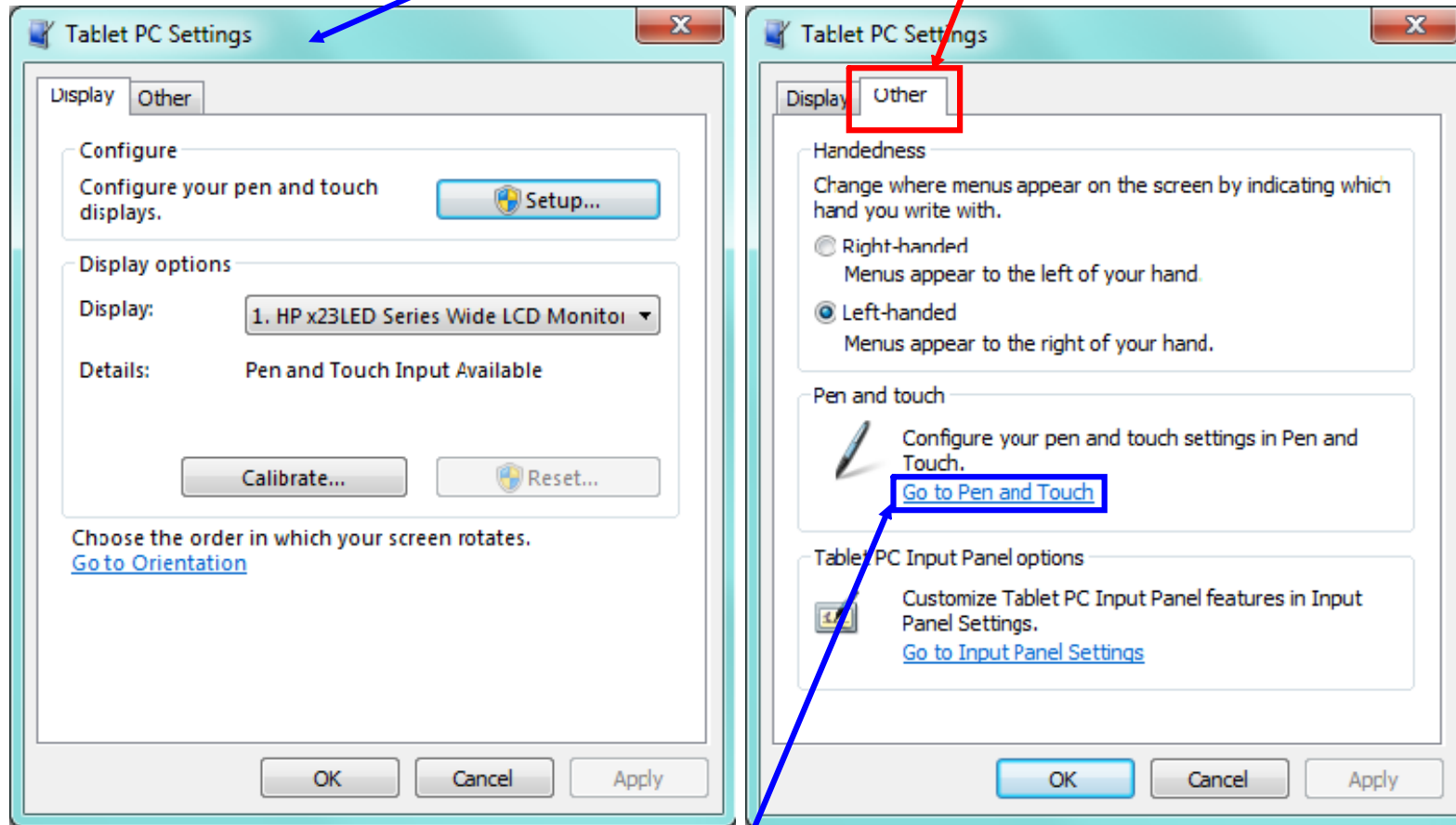
Please note: This window is being viewed by **"Large icons"**

Click on the **Tablet PC Settings**



Step 4 - "Windows® 7" Control Issues

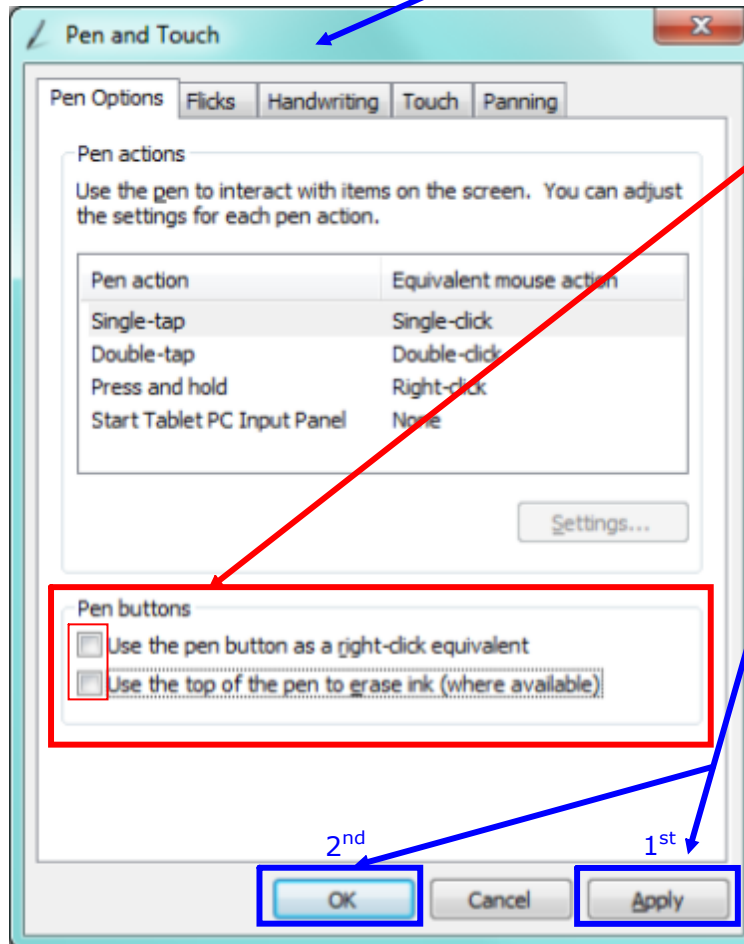
The following window will appear. Click on the **Other** tab.



Click on the link for **"Go to Pen and Touch"**.

Step 4 - "Windows® 7" Control Issues

The following window will appear.

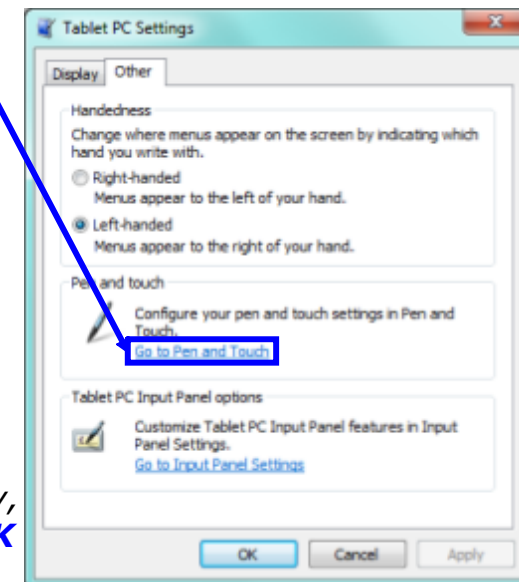


Under the "Pen Options" tab...

Un-Check (if needed) both **Boxes** under the "Pen buttons" section.

Click **Apply**, then **OK**.

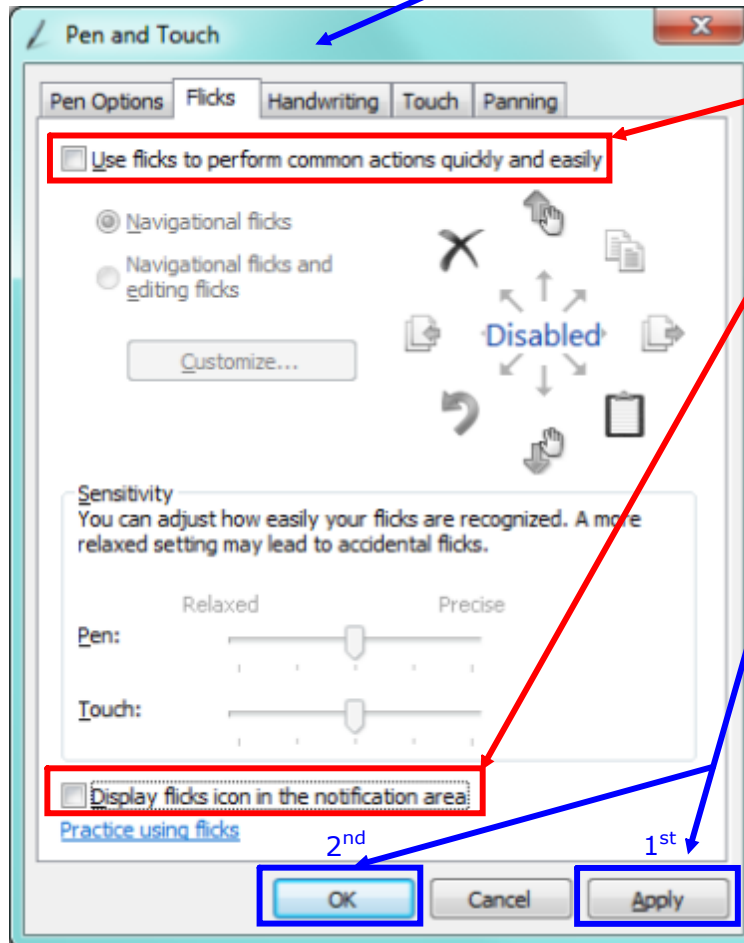
You will be back to the "Tablet PC Settings" window. Click again on the link for **"Go to Pen and Touch"**.



*Although it seems unnecessary, you should click **Apply** and **OK** after each setting is changed.*

Step 4 - "Windows® 7" Control Issues

The following window will appear.

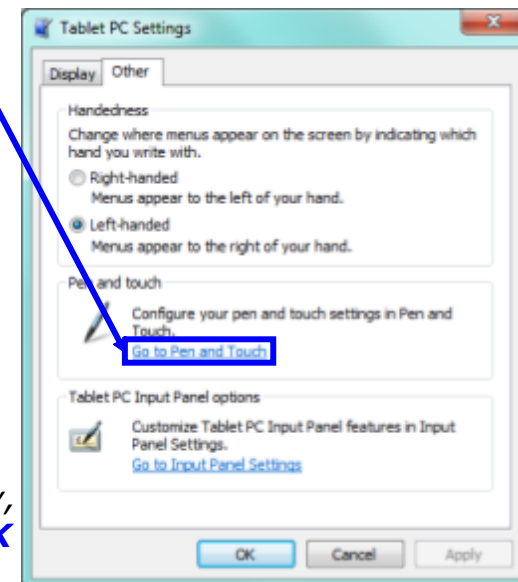


Under the "Flicks" tab...

Un-Check (if needed) both **Boxes** for Flicks.

Click **Apply**, then **OK**.

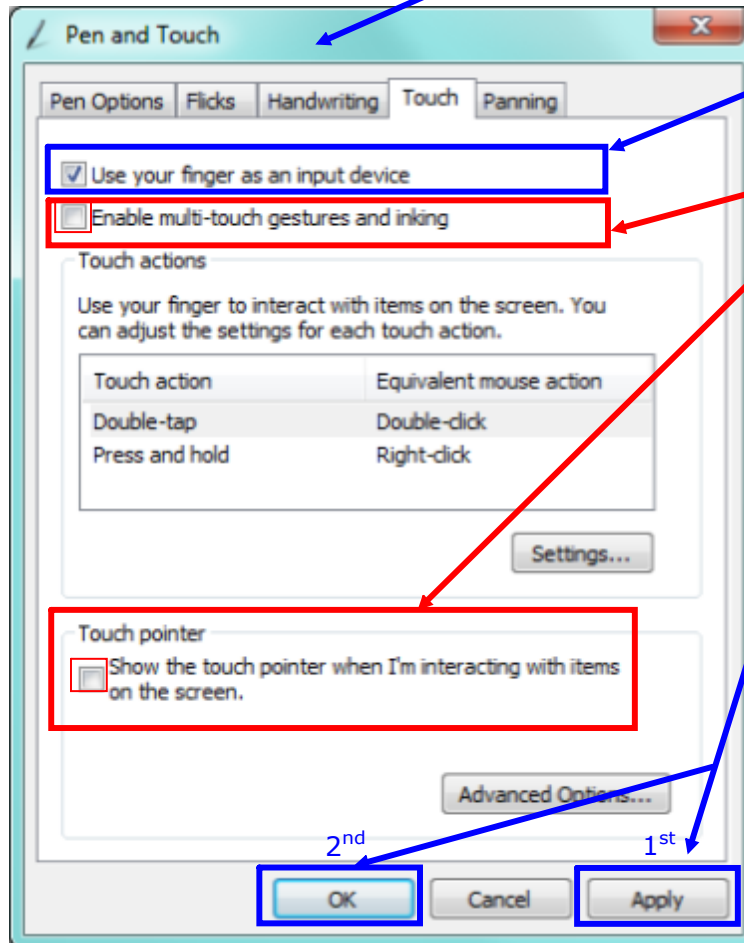
You will be back to the "Tablet PC Settings" window. Click again on the link for **"Go to Pen and Touch"**.



Although it seems unnecessary, you should click **Apply** and **OK** after each setting is changed.

Step 4 - "Windows® 7" Control Issues

The following window will appear.



Under the "Touch" tab...

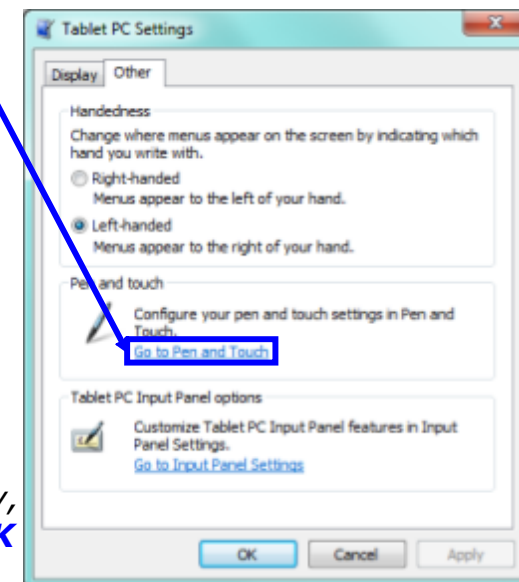
Keep the **Box** Checked for "Use your finger as an input device."

Un-Check (if needed) both **Boxes** "Enable multi-touch..." and the "Touch pointer" section.

Click **Apply**, then **OK**.

You will be back to the "Tablet PC Settings" window.

Click again on the link for **"Go to Pen and Touch"**.

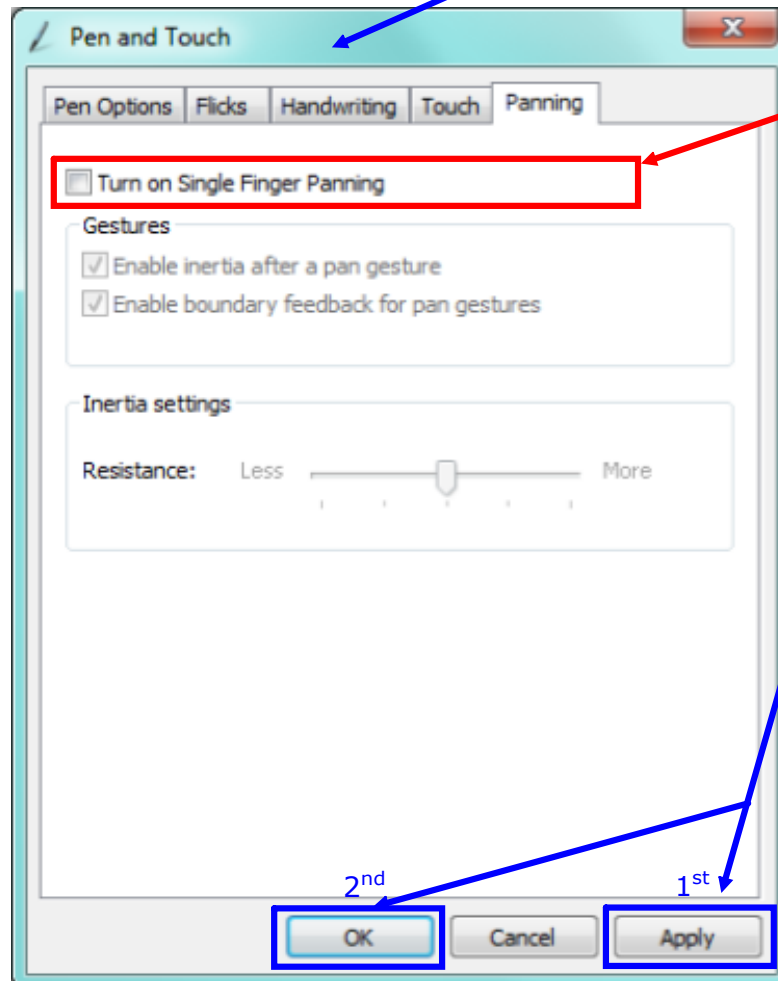


*Although it seems unnecessary, you should click **Apply** and **OK** after each setting is changed.*

Step 4 - "Windows[®] 7" Control Issues



The following window will appear.



Under the "Panning" tab...

Un-Check (if needed) the **Box** for "Turn on Single Finger Panning".

Click **Apply**, then **OK**.

*Although it seems unnecessary, you should click **Apply** and **OK** after each setting is changed.*

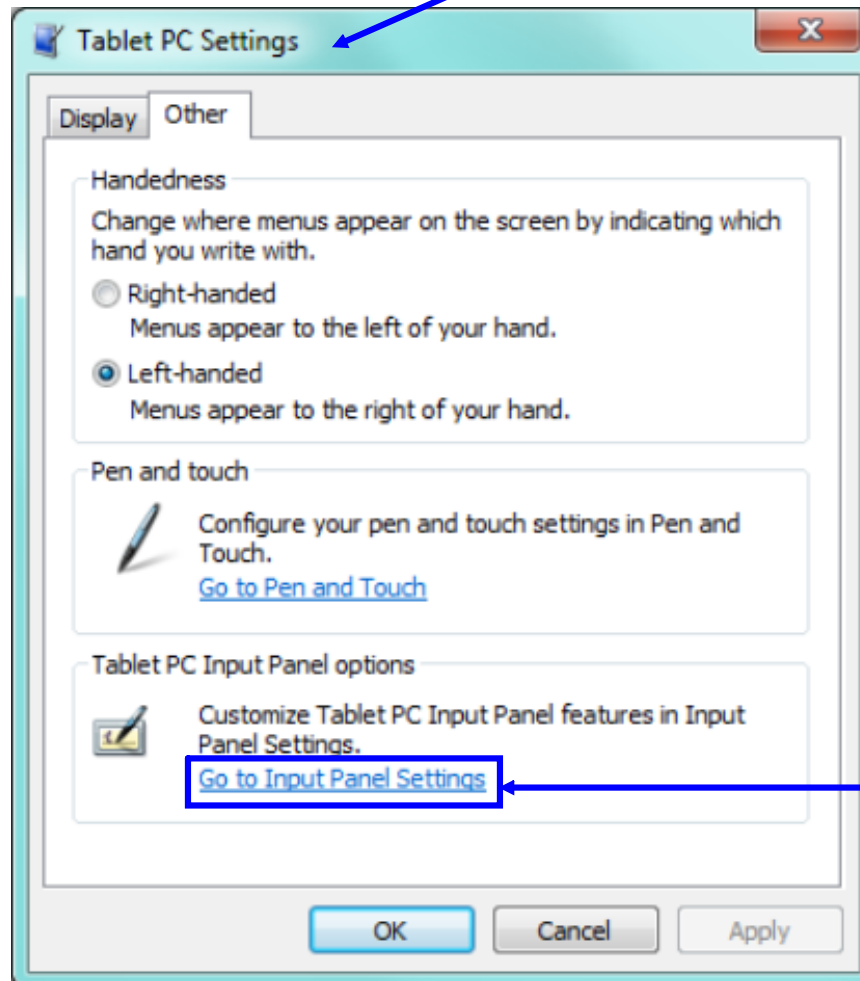
It is also recommended that you return to the "Pen and Touch" settings window to ensure that which should be turned off is in fact turned off before proceeding.

Please note: nothing is needed to be changed under the "Handwriting" tab.

Step 4 - "Windows[®] 7" Control Issues



You will be back to the "Tablet PC Settings" window.

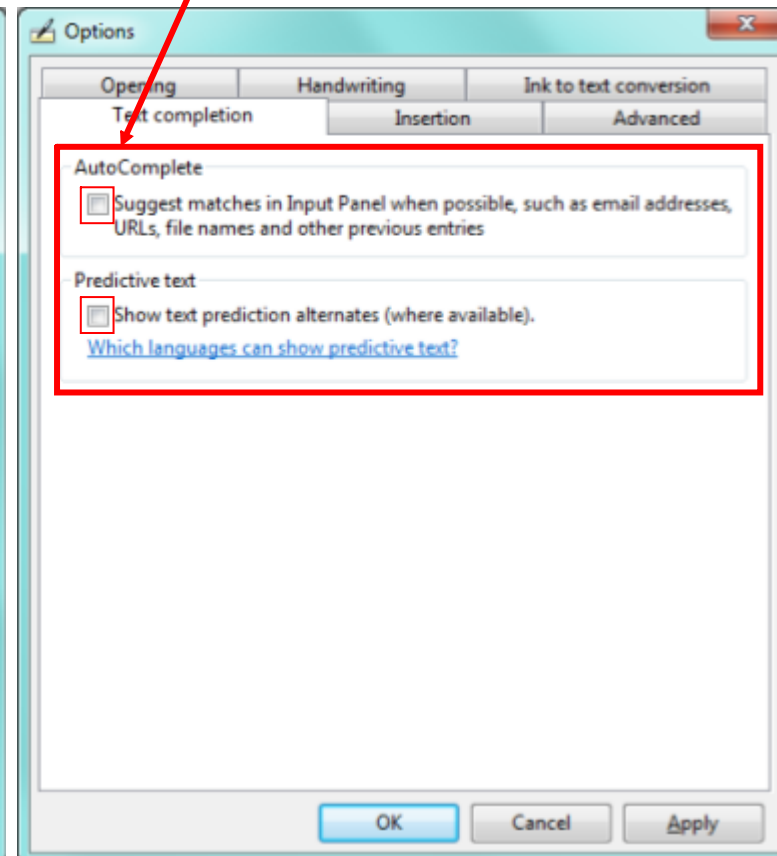
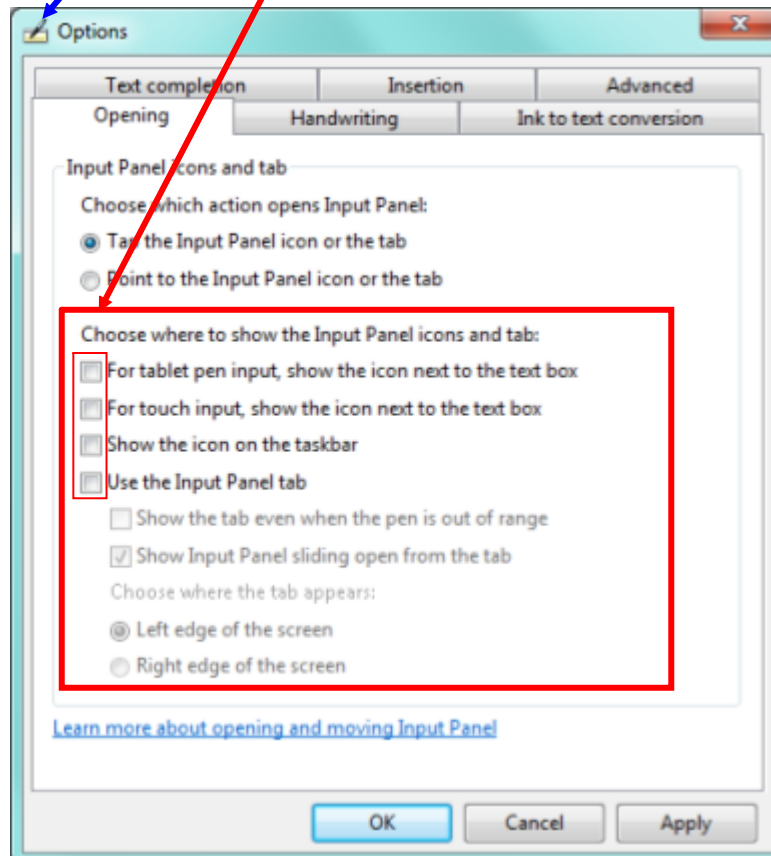


Click on the link for
"Go to Input Panel Settings".

Step 4 - "Windows® 7" Control Issues

The following window will appear.
Under the "Opening" tab...
Un-Check (if needed) all four
Boxes for "Choose where to..."

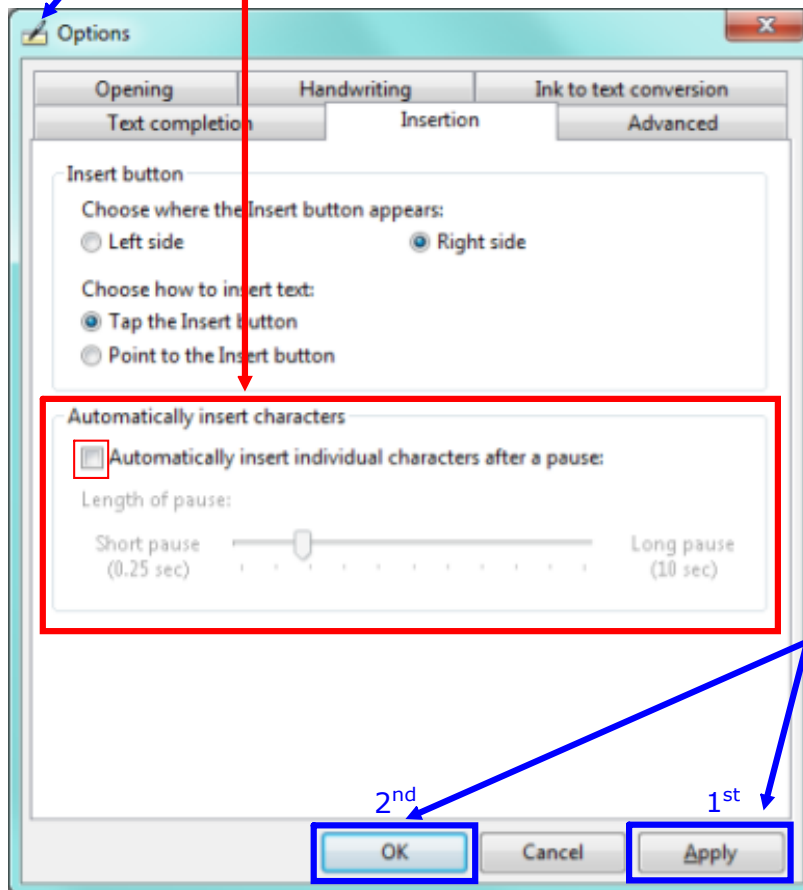
Under the "Text completion" tab...
Un-Check (if needed) both
Boxes for "Auto..." & "Predicative..."



*Unlike the "Pen and Touch" settings, there is no need to click **Apply** and **Ok** after each setting change.*

Step 4 - "Windows® 7" Control Issues

The following window is still seen.
Under the "Insertion" tab...
Un-Check (if needed) the
Box for the "Automatically..." section.



Please note: nothing is needed to be changed under the "Handwriting", "Ink to text conversion" tab, or the "Advance" tab.

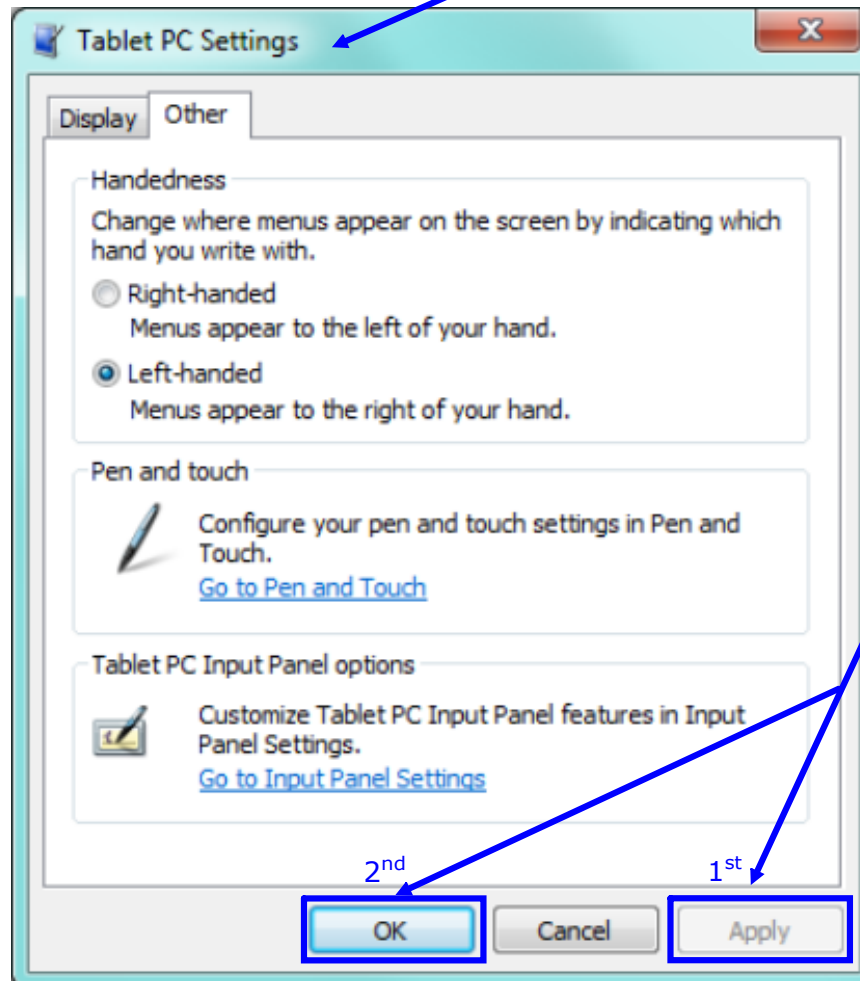
Click **Apply**, then **OK**.

It is also recommended that you return to the "Pen and Touch" settings window to ensure that which should be turned off is in fact turned off before proceeding.

Step 4 - "Windows® 7" Control Issues



You will be back to the "Tablet PC Settings" window.



Click **Apply**, then **OK**.

Attachments

Image1.psp