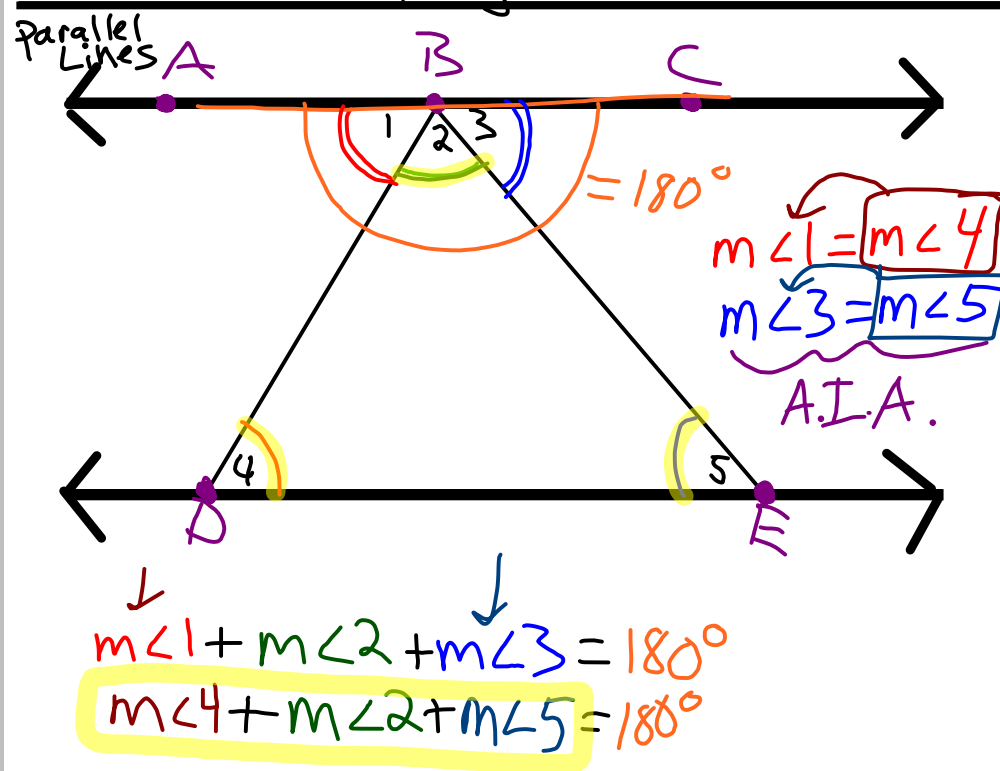


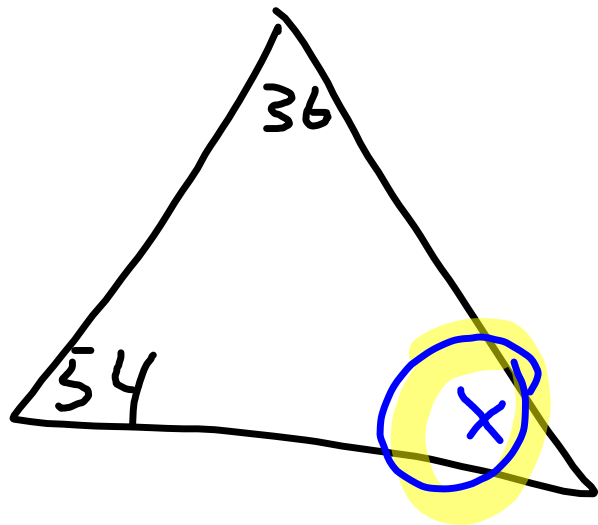
5.6 Angles of Δ 's

Feb. 12, 2007



- The Sum of the Angles of
Any Triangle is equal to 180°

3) The Degree Measurement of 2 angles of a triangle are 36 & 54. What is the measure of the 3rd angle?

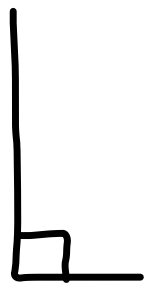


$$\underline{54} + \underline{36} + x = 180^\circ$$

$$90 + x = 180$$

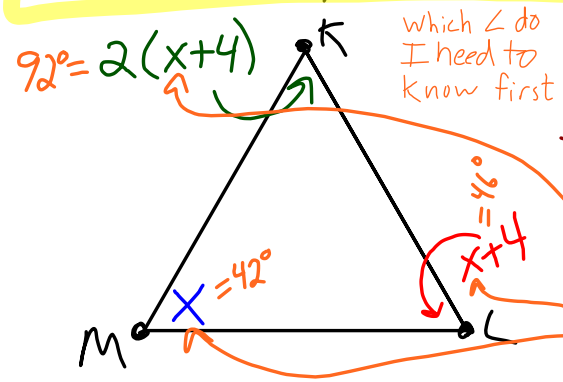
$$\begin{array}{r} -90 \quad -90 \\ \hline \end{array}$$

$$\underline{\underline{x = 90^\circ}}$$



$\triangle KLM$, $m\angle K$ is 2 times $m\angle L$
 and $m\angle L$ is 4 more than $m\angle M$

Find $m\angle K$, $m\angle L$, & $m\angle M$



which \angle do I need to know first

$$x + x + 4 + 2(x + 4) = 180$$

$$x + x + 4 + 2x + 8 = 180$$

$$4x + 12 = 180$$

$$\begin{array}{r} -12 \quad -12 \\ \hline \end{array}$$

$$\begin{array}{r} 4x = 168 \\ \hline 4 \quad 4 \end{array}$$

$$x = 42$$

$m\angle K = 92^\circ$
 $m\angle L = 46^\circ$
 $m\angle M = 42^\circ$

↑ ↑ ↑ ↑ ↑
 we are the Answers

O.T.L.

① pg 163-164: Exp: 4, 6, 8

written: 2, 6, 10, 11, 12, 13, 15

Draw
The
Picture