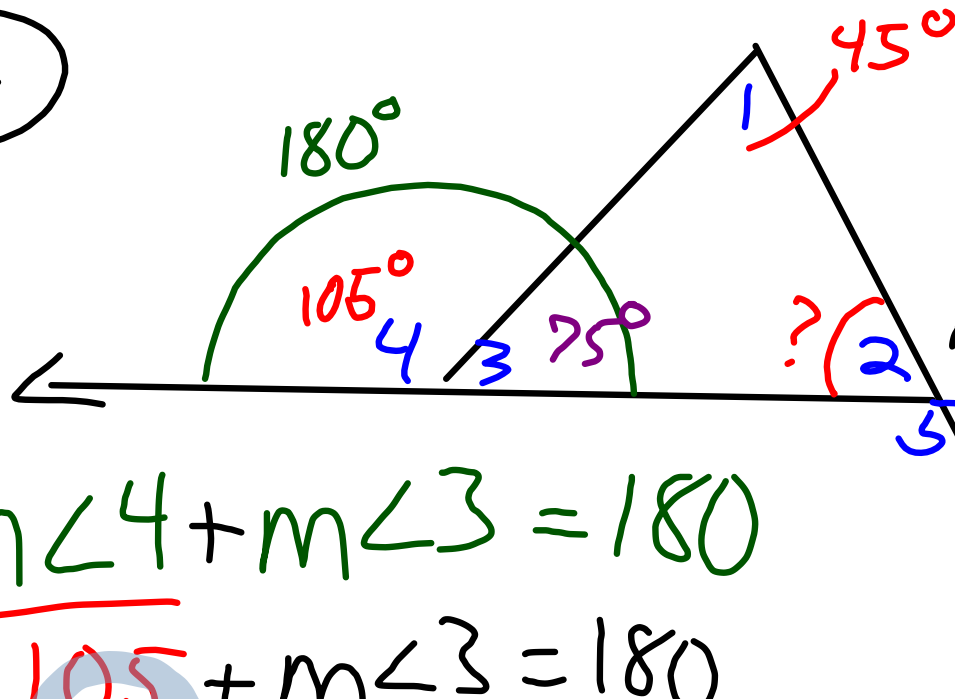


Pg 163: 4, 6, 8, 2, 6, 10, 11, 12, 13, 15

(4) 60
(6) 77
(8) 54
(2) $x=35 \dots$
(6) $x=15 \dots$
(10) $x=29 \dots$

(11) $x=70 \dots$
(12) $x=60 \dots$
(13) $m < L = 30$
(15) $m < P = 26$
 $m < R = 29$
 $m < S = 125$

④



find $m\angle 2$

$$m\angle 1 + m\angle 2 + m\angle 3 = 180$$

$$45 + m\angle 2 + 75 = 180$$

$$120 + m\angle 2 = 180$$

$$\begin{array}{r} 120 + m\angle 2 = 180 \\ -120 \quad \quad -120 \\ \hline \end{array}$$

$$\underline{\underline{m\angle 2 = 60^\circ}}$$

$$m\angle 4 + m\angle 3 = 180$$

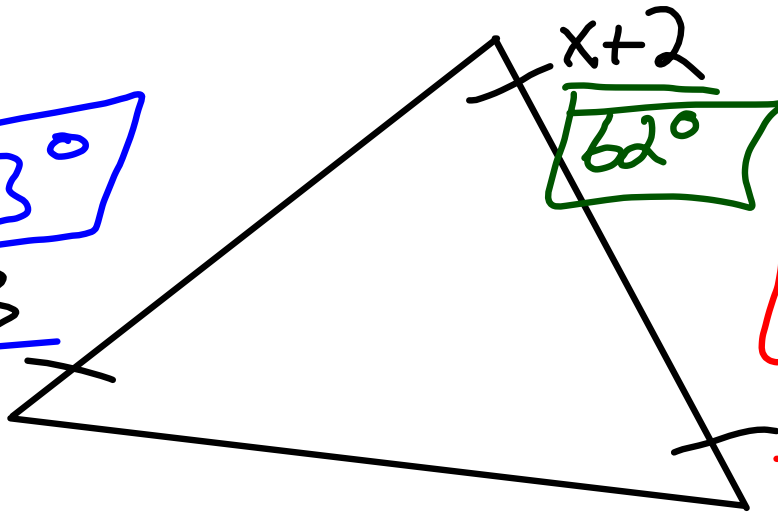
$$\begin{array}{r} 105 + m\angle 3 = 180 \\ -105 \quad \quad -105 \\ \hline \end{array}$$

$$m\angle 3 = 75^\circ$$

12

63°

$x+3$

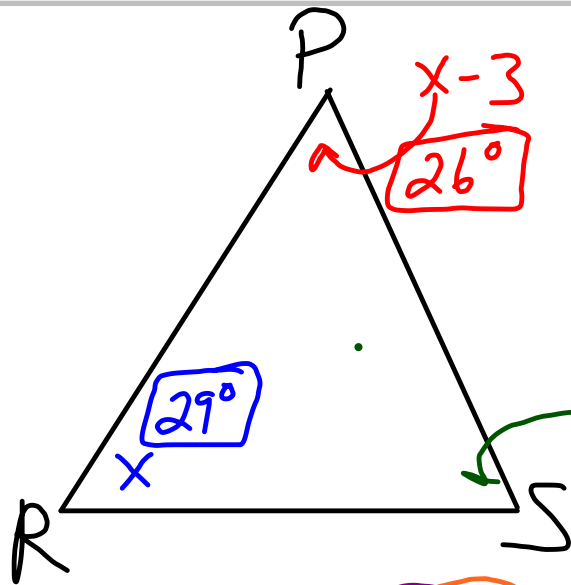


find All
3 angles

$$\underline{x+3} + \underline{x-5} + \underline{x+2} = 180$$

$$\frac{3x}{3} = \frac{180}{3}$$

$$\underline{x = 60}$$



$m\angle P$ is 3 less $m\angle R$
 $m\angle S$ is 21 more than
 4 times $m\angle P$

125°
 $4(x-3) + 21$

$$x + x - 3 + 4(x - 3) + 21 = 180$$

$$\underline{x} + \underline{x - 3} + \underline{4x - 12} + \underline{21} = 180$$

$$6x + 6 = 180$$

$$\begin{array}{r} -6 \quad -6 \\ \hline 6x = 174 \\ \underline{\quad 6} \quad \underline{\quad 6} \end{array}$$

$$\begin{array}{r} 29 \\ 6 \overline{) 174} \\ \underline{12} \\ 54 \end{array}$$

$$\boxed{x = 29}$$

O.T.L. [from yesterday]

① pg 163-164: Exp: 4, 6, 8

Written: 2, 6, 10, 11, 12, 13, 15

① pg 166: Exp: 1-6(a)

Written: 1, 3, 5, 7, 8

Draw
The
Picture

Have them work on the O.T.L. from Monday and Tuesday. That needs to be turned in. Also have them do Pt. Wk St. 5.5-5.6 and turn that in, also many did not turn in 5.4 complete yet, so tell them that. They should have these sheets, and if not, you can get more out of the folders in the back.