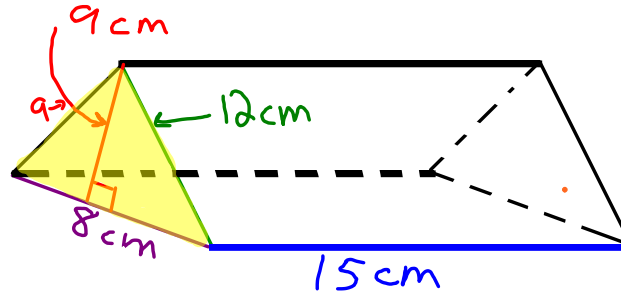


8.7 Volume

May 21, 2007

Recall

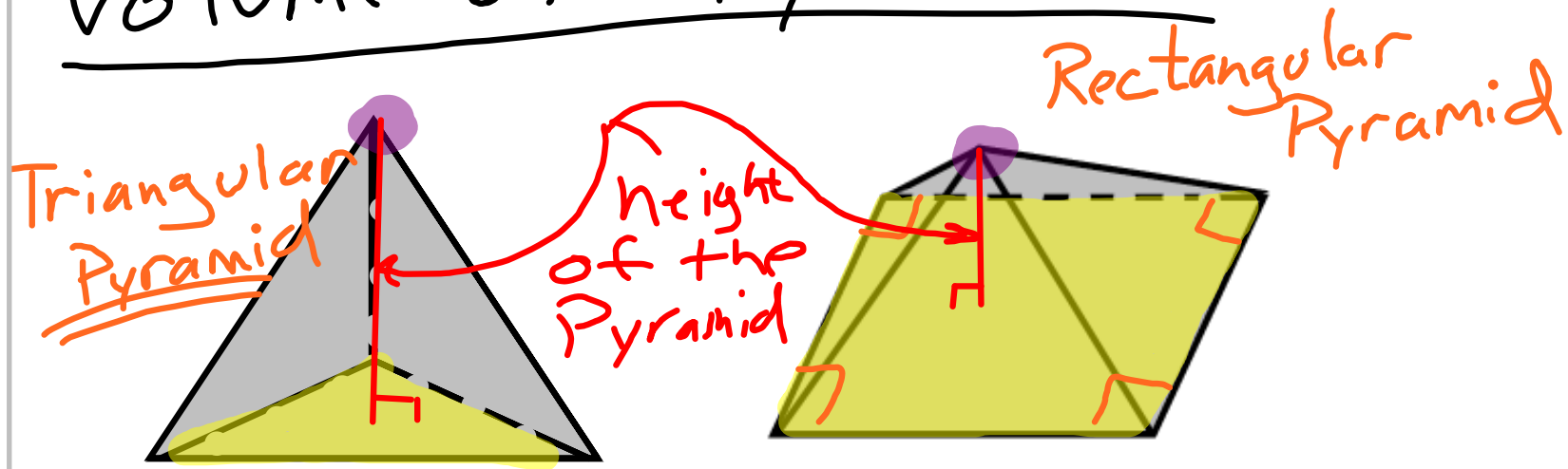
Volume of Prism = (Area of the Base) (height)



Triangular Prism
(Base) (Shape)

$$V = A_B \cdot h \quad A_B = \frac{1}{2} b \cdot h$$

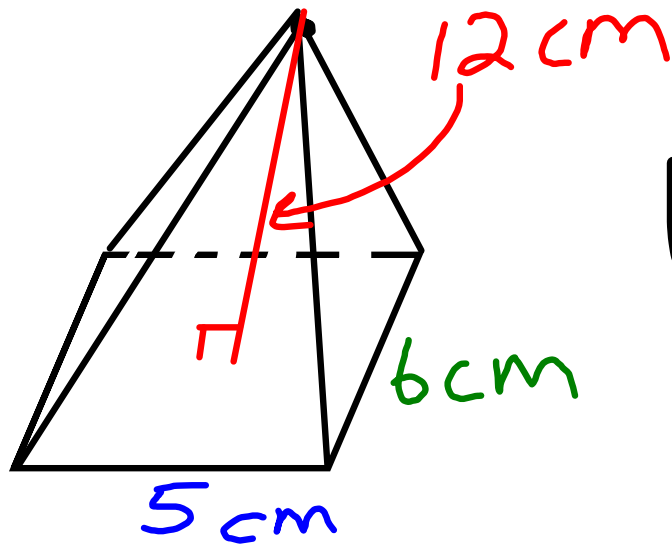
Volume of a Pyramid



The yellow is the BASE of the Pyr.

The purple dot is the Vertex of the Pyr.
(OR POINT)

$$\text{Volume of a Pyramid} = \frac{1}{3} A_B h$$



$$V = \frac{1}{3} A_B \cdot h$$

$$= \frac{1}{3} (\cancel{30}^{10} \text{ cm}^2) \cdot \underline{12 \text{ cm}}$$
$$= \underline{\underline{120 \text{ cm}^3}}$$

$$A_B = l \cdot w$$
$$= \underline{(5 \text{ cm})} \cdot \underline{(6 \text{ cm})}$$
$$= \underline{\underline{30 \text{ cm}^2}}$$

O.T.L.

Pg 267: Exp: ^{ALREADY} 1, ^{DONE} 3, 5, 6

Pg 267: Written: 1, 3, 5,
7-16 (all)

 3: Posters Due Wednesday 
May 23, 2007

4. N.B.'s. Due Wednesday Also!