

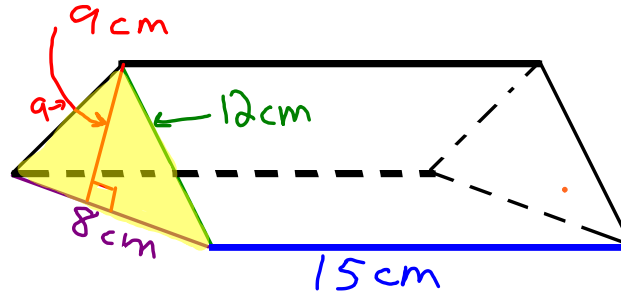
8.7 Volume

May 21, 2007

Recall

Any

Volume of Prism =

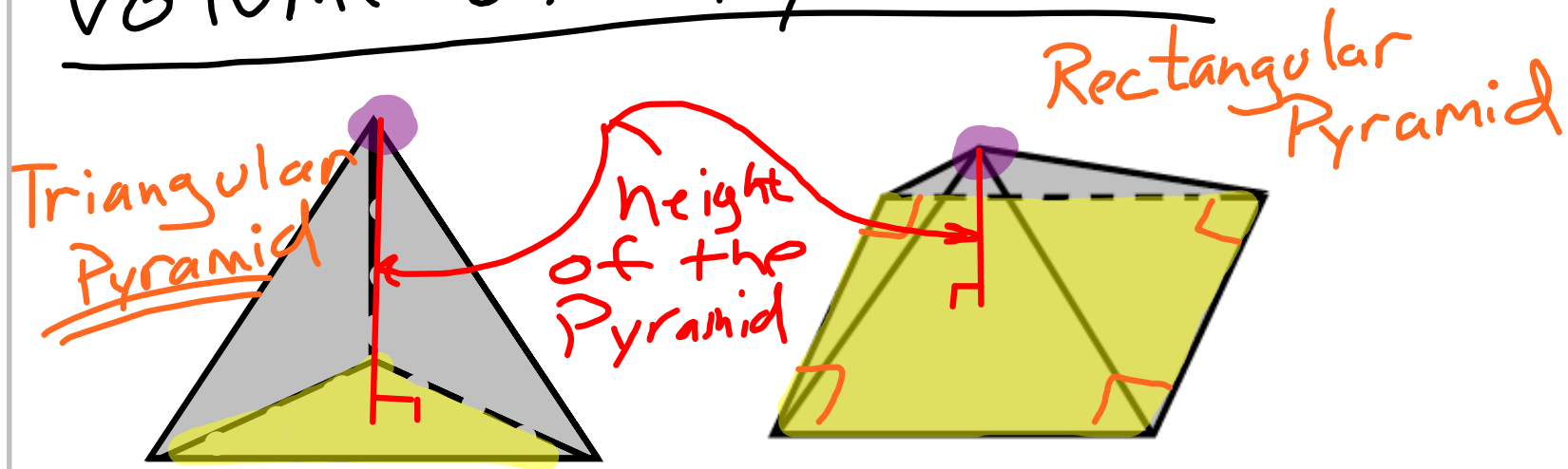


Triangular Prism
(Base) (Shape)

$$V = A_B \cdot h$$

$$A_B = \frac{1}{2} b \cdot h$$

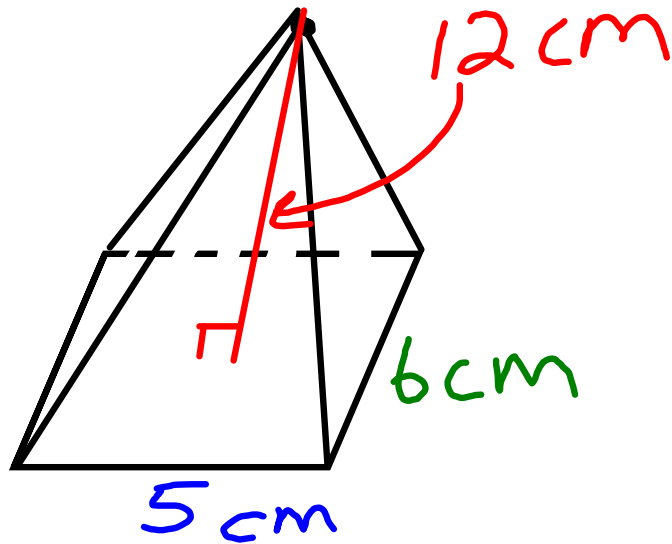
Volume of a Pyramid



The yellow is the BASE of the Pyr.

The purple dot is the vertex of the Pyr.
(OR point)

$$\text{Volume of a Pyramid} = \frac{1}{3} A_b h$$



$$V = \frac{1}{3} A_B \cdot h$$

$$= \frac{1}{3} (30 \text{ cm}^2) \cdot 12 \text{ cm}$$

$$= 120 \text{ cm}^3$$

$$\begin{aligned} A_B &= l \cdot w \\ &= (5 \text{ cm}) \cdot (6 \text{ cm}) \\ &= 30 \text{ cm}^2 \end{aligned}$$

O.T.L.

Pg 267: Exp: ^{ALREADY} 1, ^{DONE} 3, 5, 6

Pg 267: Written: 1, 3, 5,
7-16 (all)

 3: Posters Due Wednesday 
May 23, 2007

4. N.B.'s. Due Wednesday Also!