

84-90 → A

76-83 → B

65-75 → C

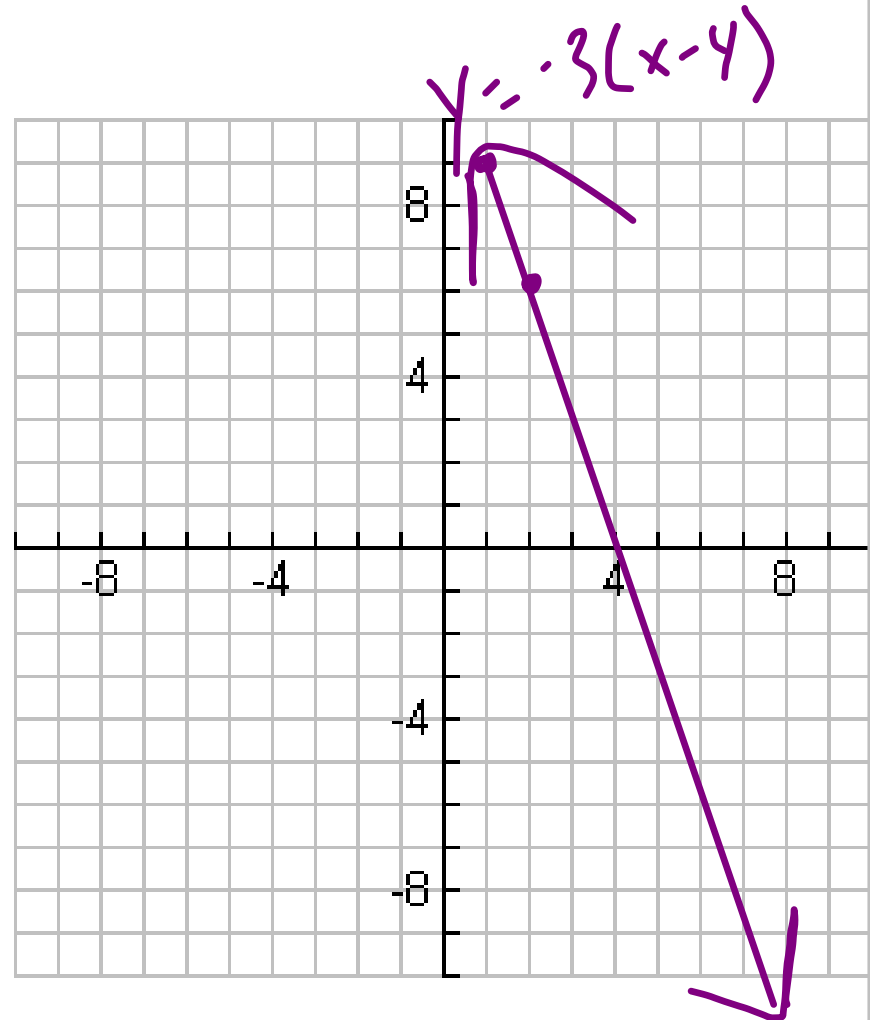
58-64 → D

52 ↓ → F

90*.84	83.7
90*.72	75.6
90*.64	64.8
	57.6

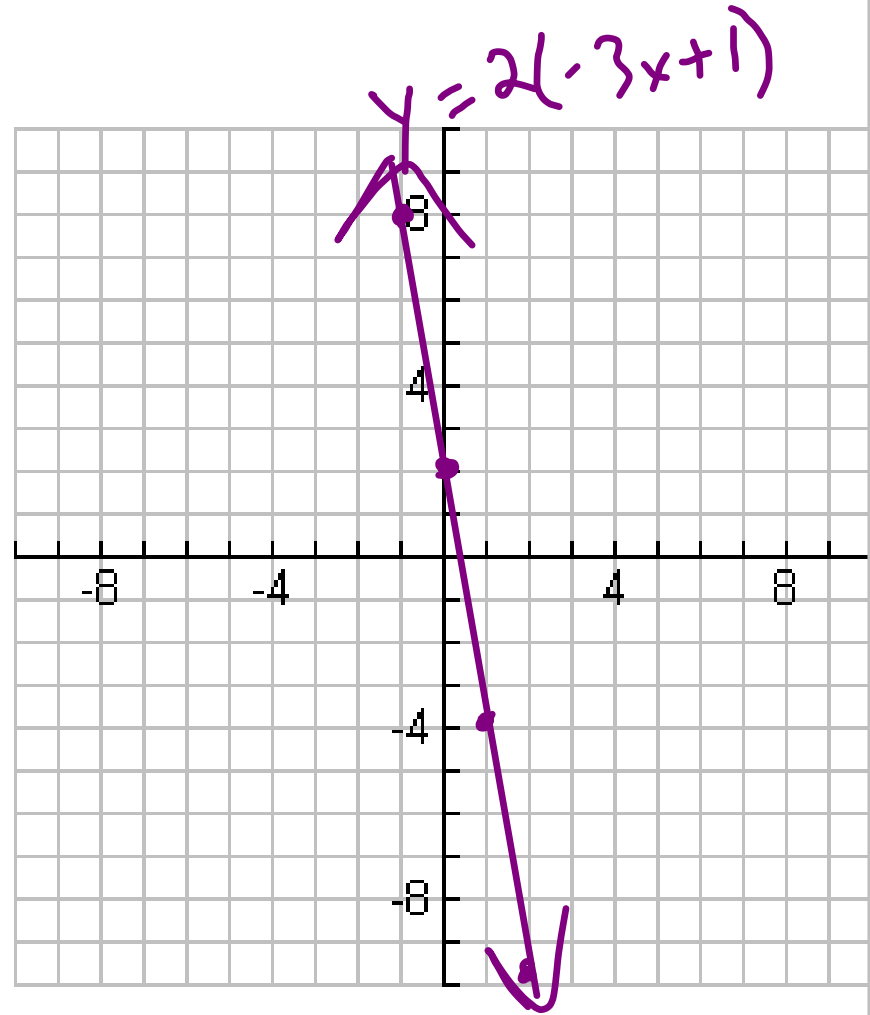
⑩ $y = -3(x - 4)$

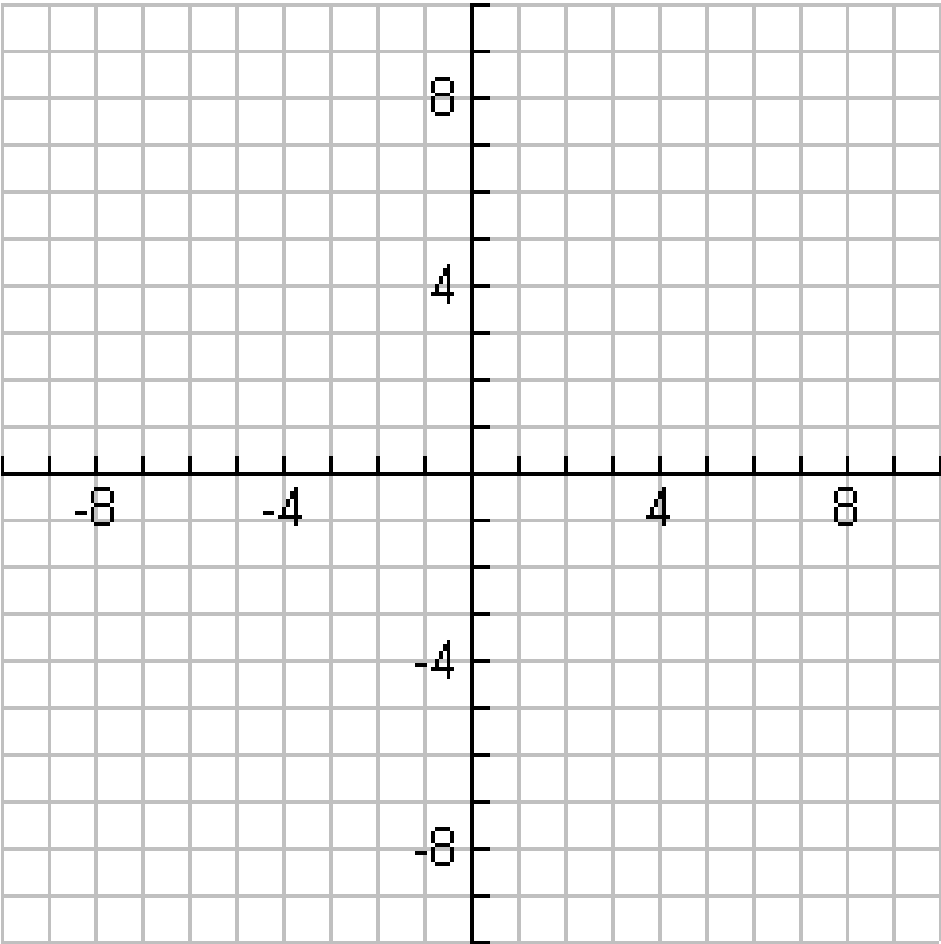
	X	Y
-6	-2	18
-3	-1	15
0	0	12
3	1	9
6	2	6



⑩ $y = 2(-3x + 1)$

x	y
-2	14
-1	8
0	2
1	-4
2	-10





22

$$\begin{array}{r}
 \textcircled{6} \quad 2x + y = 0 \\
 \quad -2x \qquad -2x \\
 \hline
 \qquad \qquad y = -2x \\
 \hline
 \hline
 \end{array}$$

$$\begin{array}{r}
 \textcircled{7} \quad 5x - 2y = 20 \\
 \quad -5x \qquad -5x \\
 \hline
 \qquad -2y = -5x + 20 \\
 \quad -2 \qquad -2 \qquad -2
 \end{array}$$

$$\begin{array}{r}
 y = \frac{5}{2}x - 10 \\
 \hline
 \hline
 \end{array}$$

~~$y = \frac{5}{2}x + 10$~~

⑧

$$\begin{array}{r} -4x - 8y = 32 \\ +4x \end{array}$$

$$\begin{array}{r} -8y = 4x + 32 \\ -8 \end{array}$$

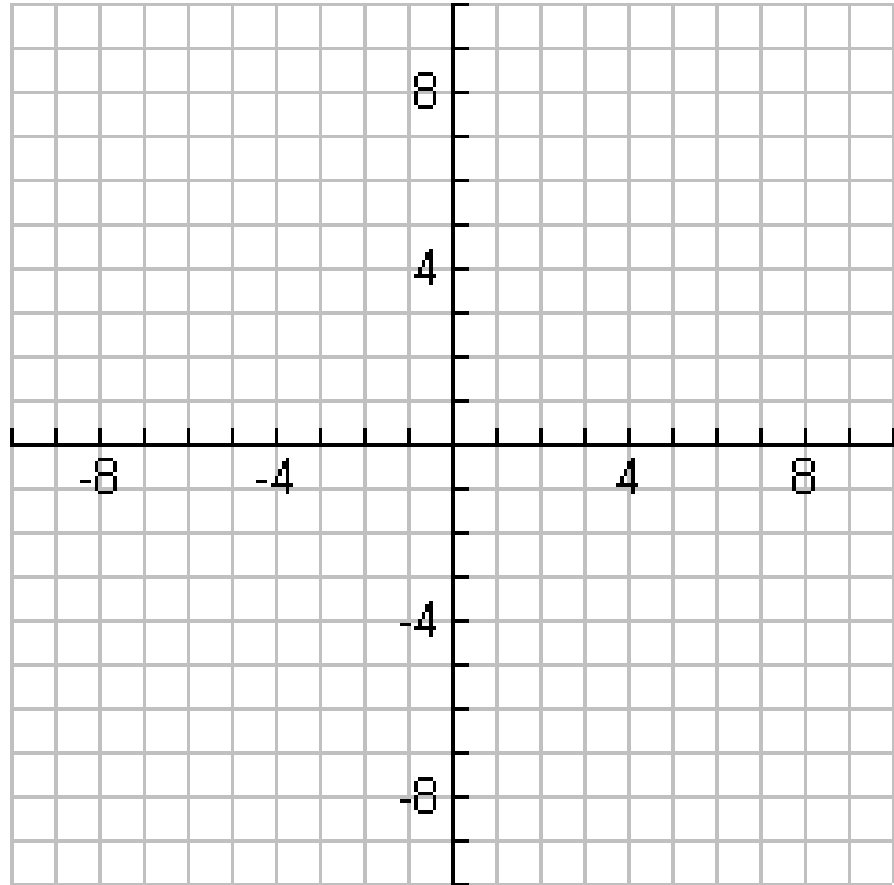
$$y = -\frac{1}{2}x - 4$$

$$\textcircled{31} \quad y - 4 = 3x$$

32

$$2x + y = 6$$

$$y = -x + 2$$



O.T.L.

Test Correction...

Due At the End of the ^{Class}

Make Sure...

- Done in order

- Correct

- Done on a separate
sheet of paper

- You do them All

- if #'s 1, 10, 11, 14-16,

33, 34
then it is on Graph
paper

- Yes you must do
#12!

- Done Completely

- you must write the
problem too!