

Handwritten notes and numbers:

- 19: 3, -3, -6
- 21: 1, -5, 6
- 23: 3, -24, 45
- 25: 1, 0, -1/4
- 27: 3/2, 2, -3/2
- 28: 25
- 31: 1
- 34: 24
- 37: 21
- 40: 1/4, 3
- 42: -1, -3/2
- 48: 2, 1, -
- 49: -3, 5
- 53: -1, 2/3
- 55: -1, 3

536-537

**You need
a Calculator
Today**

$$\textcircled{19} \quad 3x^2 = 3x + 6$$

$$- 3x - 6 \quad - 3x - 6$$

$$3x^2 - 3x - 6 = 0$$

$$a = 3$$

$$b = -3$$

$$c = -6$$

(27)

$$\frac{1}{3} - 4m^2 = 28m$$

$-28m$

$-28m$

$$-4m^2 - 28m + \frac{1}{3} = 0$$

$$a = -4$$

$$b = -28$$

$$c = \frac{1}{3}$$

③

$$5x^2 + 5x + \frac{1}{5} = 0$$

$$a = 5$$

$$b = 5$$

$$c = \frac{1}{5}$$

$$b^2 - 4ac$$

$$= (5)^2 - 4(5)\left(\frac{1}{5}\right)$$

$$= 25 - 4 = \underline{\underline{21}}$$

$$\textcircled{40} \quad 4x^2 - 13x + 3 = 0$$

$$a = 4$$

$$b = -13$$

$$c = 3$$

$$x = \frac{-b \pm \sqrt{b^2 - 4ac}}{2a}$$

$$x = \frac{-(-13) \pm \sqrt{(-13)^2 - 4(4)(3)}}{2(4)}$$

$$= \frac{13 \pm \sqrt{169 - 48}}{8} = \frac{13 \pm \sqrt{121}}{8}$$

$$= \frac{13 \pm 11}{8}$$

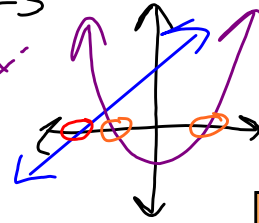
9.6 cont.

March 30, 2007

Solve: $y = x^2 + 4x - 5$

Let $y=0$ to solve for 'x'

$$0 = x^2 + 4x - 5$$



$$a = 1$$

$$b = 4$$

$$c = -5$$

Q.F.

$$x = \frac{-b \pm \sqrt{b^2 - 4ac}}{2a}$$

$$x = \frac{-4 \pm \sqrt{(4)^2 - 4(1)(-5)}}{2(1)}$$

$$= \frac{-4 \pm \sqrt{16 + 20}}{2} = \frac{-4 \pm \sqrt{36}}{2} = \frac{-4 \pm 6}{2}$$

$$x = \frac{-4 + 6}{2}$$

$$= \frac{2}{2}$$

$$x = 1$$

or

$$x = \frac{-4 - 6}{2}$$

$$= \frac{-10}{2}$$

$$x = -5$$

Solve: $2x^2 - 3x = 8$ (1st Put this into Standard Form $ax^2 + bx + c = 0$)

$$2x^2 - 3x - 8 = 0$$

$$a = 2$$
$$b = -3$$
$$c = -8$$

Q.F.

$$x = \frac{-b \pm \sqrt{b^2 - 4ac}}{2a}$$

$$x = \frac{-(-3) \pm \sqrt{(-3)^2 - 4(2)(-8)}}{2(2)}$$

$$= \frac{3 \pm \sqrt{9 + 64}}{4} = \frac{3 \pm \sqrt{73}}{4} \approx \frac{3 \pm 8.5440}{4}$$

8.544003745
↑
0.5

$$x \approx \frac{3 + 8.5440}{4} \quad \text{or} \quad x \approx \frac{3 - 8.5440}{4}$$

$$x \approx \underline{2.886} \quad \text{or} \quad x \approx \underline{-1.386}$$

$$x \approx \underline{2.89} \quad \text{or} \quad x \approx \underline{-1.39}$$

○ .T.L.

① Pg 537: 40-66 (even)

② Chapter 9 Test Tuesday!

No
Calcs

{ Ch. 9. Quiz.
3 Q.F. Problems (Nice)

w/
Calc.

{ $\frac{1}{2}$ Sheet w/ 1 Q.F. Problem
Not Nice

O.T.L.

① Pg 537: 40-66 (ALL)

& Pg. 539: 85-101 ALL

② Chapter 9 Test Tuesday!

No
Calcs

{ Ch. 9. Quiz.
3 Q.F. Problems (Nice)

w/
Calc.

{ $\frac{1}{2}$ Sheet w/ 1 Q.F. Problem
Not Nice