

7 yes

10 no

1 acute

2 obtuse

3 straight

4 reflex

5 right

6 acute

7 obtuse

8 reflex

9 30°

10 127°

11 90°

12-14 Draw...

15 Yes

17 QS

QT

19 $\angle PQV,$
 $\angle SQV,$
 $\angle 3, \angle 4$

21 V

on My Paper

Jan. 29, 2004

$\frac{\text{Part}}{\text{Whole}}$

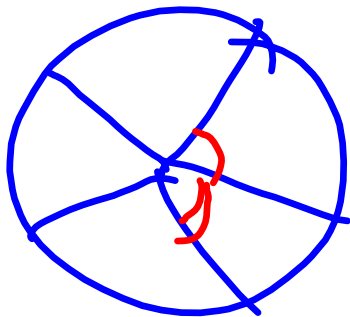
1st

$$\frac{\text{angle}}{360}$$

2nd

$$\approx \frac{\text{Part Stuff}}{\text{Whole Stuff}}$$

360° in a Circle



Slice ; wedge

Pork = 10%

$$\frac{x}{360} = \frac{10}{100}$$

Chicken = 40%

$$\frac{x \cdot 100}{100} = \frac{10 \cdot 360}{100}$$

$$x = \frac{40 \cdot 360}{100}$$

$$x = \frac{10 \cdot 360}{100}$$
$$= 36^\circ$$

$$= 144^\circ$$

Fish =

Beef

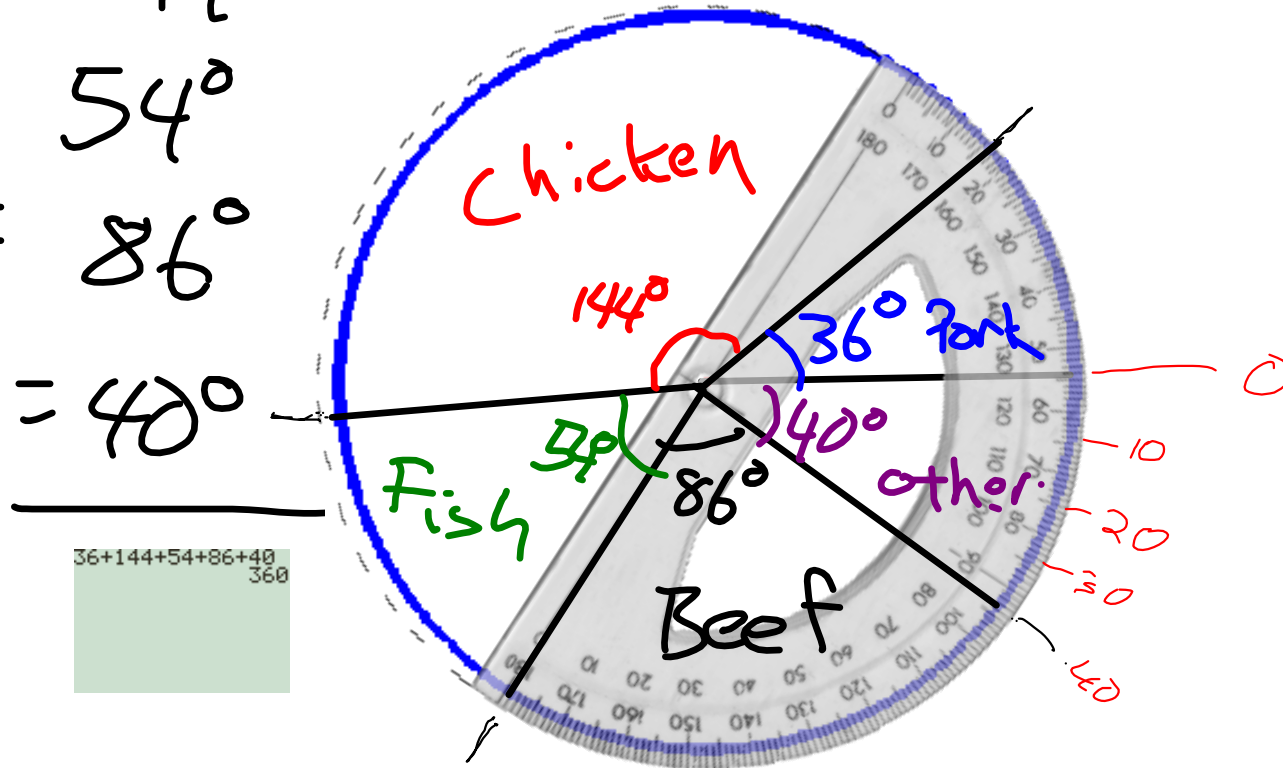
Pork = 36°

Chicken = 144°

Fish = 54°

Beef = 86°

Other = 40°



$$\text{Rock} = 240$$

Country =

$$x = \frac{360 \cdot 180}{540}$$

$$x =$$

$$\frac{x}{360} = \frac{240}{540}$$

$$\frac{x \cdot 540}{540} = \frac{360 \cdot 240}{540}$$

$$x = \frac{360 \cdot 240}{540}$$

$$x = 160^\circ$$

540
is
whole
CD's
Sold

Rock = 160°

Country = 120°

Jazz = 56°

Classical = 24°

$160+120+56+24$
360

